



Gratitude Report

2024-25





St. Charles
Foundation



To Our Community:

At St. Charles Foundation, we believe that your generosity can transform the breadth and depth of health care services available across the region.

Last year, the Foundation invested \$1.34 million to fuel innovation and progress as we continue to navigate complex challenges in the health care industry.

Because of you:

- Patients in need of spinal surgery will have shorter recovery times due to the arrival of the first 7D spinal navigation machine in Oregon.
- Community members in Madras have shorter wait times to see a doctor with the start of the Three Sisters Rural Track Residency Program.
- 23 caregivers received a scholarship to fulfill their health care career goals.

These are just a few examples of the way donors are leading the charge to expand health care services. But there is more work to do.

Over the next decade, we will embark on a journey together that will call on all of us to dream big — to imagine a place where Central Oregon's residents and visitors have access to specialized health care services when they need them, right here at home.

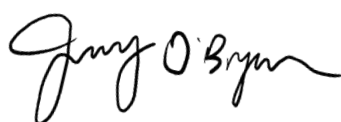
A place where we have state-of-the-art facilities and technology and more providers who have been trained in leading-edge research.

A place where no one waits in pain for a knee replacement or a simple visit with a primary care doctor.

Can you see it? This is a place we all deserve for ourselves and our loved ones.

When you give to the Foundation, it's a testament to your commitment to this vision and for that, I am so grateful. On behalf of the St. Charles Foundation Board and staff, thank you for trusting us to make this dream a reality.

With gratitude,



Jenny O'Bryan

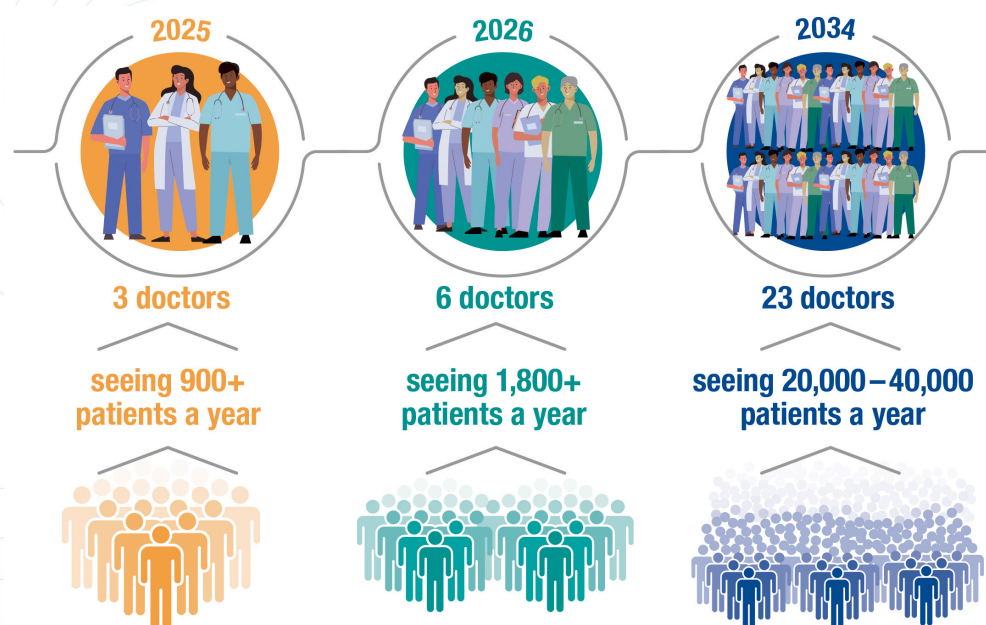
Executive Director
St. Charles Foundation

Training tomorrow's doctors, today

In 2024, St. Charles Foundation invited the community to come alongside the health system and support its latest start-up initiative, the Three Sisters Rural Track Residency Program.

The training program creates a pathway for specially trained physicians to dramatically improve health care access in Central Oregon, where many towns have a shortage of providers. Research has shown that about 55% of physicians stay within a 100-mile radius of their residency site. This means that within 10 years, Three Sisters RTP is estimated to produce 23 physicians who would reside in Central Oregon and provide care for 20,000 to 40,000 patients in the region.

Thanks to the generous contributions from attendees of the 2024 Saints Gala and numerous individual donors who are passionate about education and expanding health care access in rural communities, we have secured the critical funding needed to launch the program. As a result, the first cohort of resident physicians will start caring for patients in Central Oregon in August 2025.



Scan the QR code to learn more about the Three Sisters Rural Track Program.



“Donor support has been instrumental in beginning to bridge the gap between urban and rural health care services. We have been able to purchase new equipment, bring in additional educational resources, and complete facility upgrades which are vital for creating a conducive learning environment for our residents.”

“Additionally, donor support is helping attract high-quality candidates by offering competitive stipends during the recruitment process, ensuring that the program can draw talented individuals committed to serving rural communities.”

- Dr. Jinnell Lewis, Three Sisters
Rural Track Program director

The second cohort of residents matched with the program on March 21, 2025, and will begin their first year of training at OHSU in August. That means by the summer of 2026, there will be even more providers caring for the Jefferson County community.





INNOVATION Fueled by Partnership

To improve the health of a community, no single person or group can make a significant impact alone. It requires ownership, partnership and support from everyone to rally around a cause. At St. Charles Foundation, we are grateful for the partnership of Mid Oregon Credit Union as we both pursue the improvement of our community's health and well-being.

For almost 70 years, Mid Oregon Credit Union has played a key role in our community's development through service and partnership. "At Mid Oregon Credit Union, we can only be fully successful when our communities thrive," said Kevin Cole, President and CEO. "St. Charles Health System plays a vital role in helping Central Oregon communities thrive and we are honored to support St. Charles Foundation by investing dollars through our employee benefits program. Our organizations share a common service area and a strong focus on service quality and positive community impact, and we look forward to what is to come."

"Mid Oregon truly embodies what philanthropy is all about – extending love and goodwill to others," said Jenny O'Bryan, St. Charles Foundation Executive Director. "By financially supporting numerous initiatives at St. Charles and across Central Oregon, volunteering at community events and encouraging their employees to volunteer on nonprofit boards, Mid Oregon goes above and beyond every day to make our community thrive, and we are so grateful for their partnership."

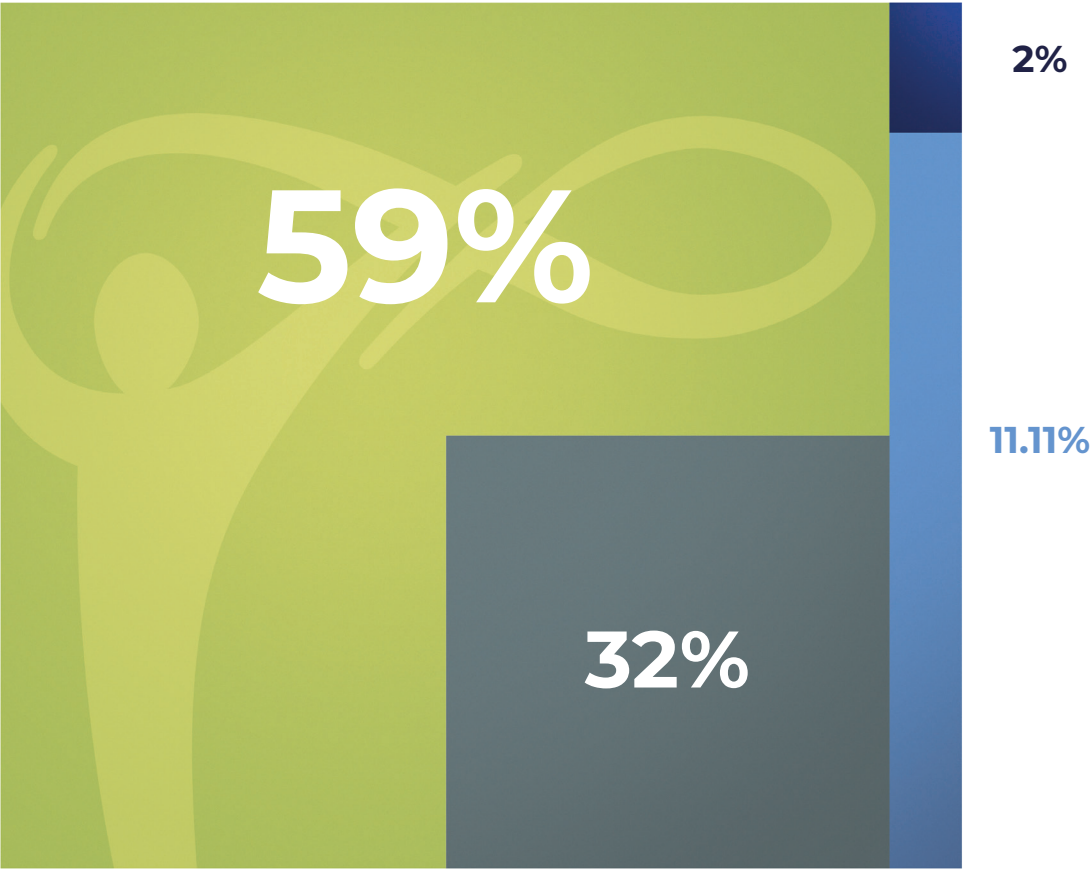
**To become a corporate partner of
St. Charles Foundation, please contact
Marcus Thompson, Philanthropy Officer.**



2024 FINANCIAL Summary

St. Charles Foundation partners with the community to address the ever-changing health needs of our region. Currently the demand for essential health care services in Central Oregon exceeds supply and we know our rural communities are counting on us to preserve, strengthen and evolve the care available.

Last year, \$1.34 million in community donations provided education opportunities to caregivers, purchased new technology to improve patient care and created and sustained programs across the region.



Equipment/Capital	\$788,482.66	59%
Patient Support	\$432,916.40	32%
Caregiver Support/Education	\$88,264.69	11.11%
Innovative Program Support	\$30,641.55	2%

THANK YOU FOR Joining Us!

We are so grateful to every person who joined us for St. Charles Foundation's signature events; **Saints Gala**, **Heaven Can Wait 5K** and **Prineville's Hospice Auction**.



2025 Saints Gala

In February 2025, St. Charles Foundation hosted its annual Saints Gala at the Riverhouse Convention Center in Bend. During the gala, the Foundation raised \$548,000 in support of its mission and the expansion and construction of a new Inpatient Rehabilitation unit in the Bend hospital. A special thanks to our presenting sponsors, Central Oregon Radiology Associates (CORA) and Genentech.

2024 Hospice Auction

Each December, the Prineville community kicks off the holiday season at the Prineville Hospice Auction. The community raised \$180,000 for education support services, grief counseling, bedside volunteers, spiritual counseling and more for St. Charles' hospice programs. We are so grateful to Central Oregon Radiology Associates (CORA) for their annual support of this event.



To learn more about how to **support our events**, contact Anna Contreras, Events and Development Officer





2024 Heaven Can Wait 5K

For the third year in a row, we kicked off Breast Cancer Awareness Month by hosting Heaven Can Wait in Redmond. More than 1,200 community members walked and ran in solidarity with the people in their lives who have been touched by breast cancer, including the 209 survivors in attendance. Raising more than \$100,000 for breast cancer survivorship programs and research, we are so grateful to Central Oregon Radiology Associates (CORA) and St. Charles Oncology doctors for their annual support of this event.

THANK YOU FOR MAKING IT SPECIAL!
JOIN US NEXT YEAR!



Event Dates

Sunday, Oct. 5, 2025 – Heaven Can Wait 5k

Saturday, Dec. 6, 2025 – Prineville's

Hospice Auction

Saturday, Feb. 21, 2026 – Saints Gala

ST. CHARLES Foundation Board of Directors

Bill Kuhn, Chair

John Salzer, Vice Chair

Matt Mitchell, Secretary

Lisa Alger

Mark Capell

Lou Capozzi

Shannon Edgar

Michele Emery

Dr. Steve Gordon

Sharon Gueck

Marv Kaplan

Dr. Norwyn Newby

Connie Newport

Matt Swafford, Ex Officio

Lois Vallergera

ST. CHARLES Foundation Staff

Jenny O'Bryan, Executive Director

Angela Saraceno, Philanthropy Manager

Kelly Janes, Operations Manager

Michelle Solley, Philanthropy Officer

Marcus Thompson, Philanthropy Officer

Anna Contreras, Events & Development Officer

Sophie Bibbey, Annual Giving Officer

Tami Young, Foundation Coordinator

Patty Larios, Senior Database Specialist

Cindy Fields, Database Specialist



SHARE Thanks!

Are you or someone you know grateful for the care you received at St. Charles? Please let us know by scanning the QR code below to share your story.



“I had the most amazing night nurse named **Rhonda**. She made sure I had everything I needed and more.”

“I am so very grateful to **Dr. Dixon** and her staff for such competent and gracious care! My life will be much better, and I will enjoy my children and grandchildren to the fullest.”

“**Kris** was so gentle, detailed and patient with my mother. He took the time to explain and draw a picture of the surgery for us. I never felt like he was in a rush and the way he spoke, you could tell he was such a kind person.
Thank you!”



St. Charles
Foundation

2024-2025 Gratitude Report

St. Charles Foundation works with the community to develop and steward philanthropic resources to fund programs and projects that improve health, prevent disease, enhance quality of life and provide the highest quality care possible.

2500 NE Neff Rd, Bend, OR 97701 | 541.706.6996 | giving@stcharleshealthcare.org